



# HUNTER'S HILL COUNCIL

## SIGNIFICANT TREE REGISTER

### TREE PROFILE SHEET

#### 1. LOCATION OF PROPERTY

House Nos: 2 & 3  
Street: James Street  
Suburb: Hunters Hill  
Post Code: 2110  
GPS Co ordinates : northing 6255208.78, easting 327959.125  
Other: Located on site boundary



#### 2. DETAILS

Listed Significant Trees:

Botanical Name	Common Name
<i>Ficus macrophylla</i>	Moreton Bay Fig

Public or Private Type: Private  
Group or Individual: Individual  
Date of Assessment/Inspection: 17.09.2014

#### 3. STATEMENT OF SIGNIFICANCE

The *Ficus macrophylla* (Moreton Bay Fig) with its considerable height, spread and sculptural form is regarded as an excellent example of the taxon (*aesthetic value*).

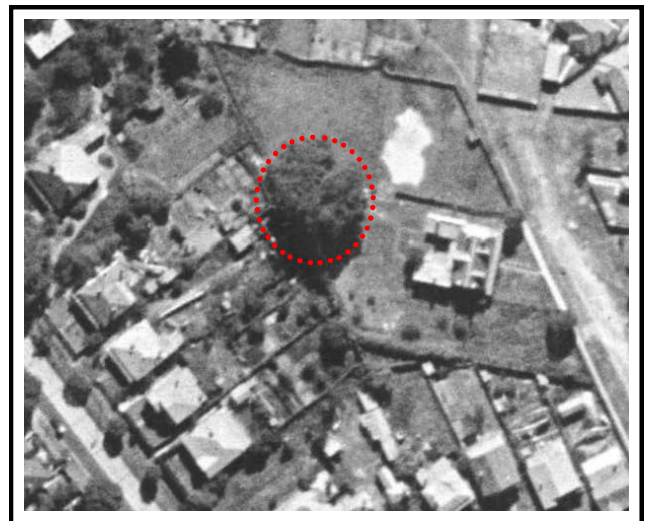
The Moreton Bay Fig is believed to be associated with construction of 'Daybreak' and remains as a significant historic and cultural element from Victorian-era planting schemes. Examples of the species are now rare within a residential setting (*historic value*).

The Moreton Bay Fig is believed to date from the early 1880's; an old example of the species for the Hunters Hill LGA (*botanic/scientific value*).

The *Ficus macrophylla* (Moreton Bay Fig) is considered to have individual local significance in terms of aesthetic, historic and botanic/scientific value.

#### 4. IMAGES

IMAGE SOURCE: RTA, From the Skies, 1943





## 2 & 3 JAMES STREET, HUNTERS HILL — SIGNIFICANT TREE REGISTER

---

### 5. SIGNIFICANCE ATTRIBUTES

Cultural/Social/Commemorative  Historic  Botanical/Scientific  Ecological  Visual/Aesthetic

---

### 6. SIGNIFICANCE LEVEL

Local  State  National

---

### 7. BACKGROUND

The *Ficus macrophylla* (Moreton Bay Fig) is jointly owned and is located in the rear garden area of 2 James Street and 3 James Street, Hunters Hill. The site at 2 James Street known as 'Daybreak' is listed in the Hunters Hill Local Environment Plan (LEP) 2012 Schedule 5 Item (I184). The subject tree has a separate listing in the LEP (Item I243).

*Ficus macrophylla* (Moreton Bay Fig) is a large evergreen broadleaf species that is native to most of the east coast of Australia. The species was an early ornamental introduction to colonial gardens and became a major landscape element throughout much of the 19<sup>th</sup> century. This species remains as a significant historic and cultural element from Victorian-era planting schemes. The impressive scale and broad dense canopies of these evergreens were ideally suited to grand garden schemes. Charles Moore (Director, Sydney Botanic Gardens 1848-1896) promoted the use of Moreton Bay Figs and many other rainforest specimens throughout the mid - to late 19<sup>th</sup> century. The species was also planted in semi-rural parts of Sydney to provide shade for livestock.

The cottage at 2 James Street was built around 1883 and first occupied by Robert Lenehan in 1884. It remained in the Lenehan family until 1920. The early name for the house was 'College View' indicating its elevated vantage point and view of St Joseph's College (opened in 1882). 'College View' was built of 9 inch sandstone bricks, cement-rendered, painted and lined to simulate stonework (a common practice during the 1880's).<sup>1</sup>

The Plan of the Municipality of Hunters Hill (1861) shows the area of land within the subject site owned by D.J Joubert. Didier Joubert, a merchant from Bordeaux, France, bought Mary Reiby's Figtree Farm in 1847.

A 1943 aerial image of the site shows the Moreton Bay Fig as a prominent tree. The image indicates that the site had already been subdivided into its current land size; a vacant block is occupying the land at 3 James Street however the signs of a boundary fence are evident. The dwelling at 3 James Street is from a more recent period. It is difficult to determine the exact planting date for the Fig however due to its large size in 1943, it is believed that the tree dates from the time of construction of the cottage (1883).

The Moreton Bay Fig is regarded as an outstanding example of the species. With a height in excess of 25 metres and a spread in excess of 30 metres, the tree is considered one of the largest in the Hunters Hill area (see also listing for 12 Mark Street, Hunters Hill).

Moreton Bay Figs potential to attain a large size and canopy spread has meant few examples of the species remain in a residential environment.

---

#### References:

<sup>1</sup> Don Godden & Associates (1989) *Hunters Hill Heritage Properties*, NSW