



HUNTER'S HILL COUNCIL

SIGNIFICANT TREE REGISTER

TREE PROFILE SHEET

1. LOCATION OF PROPERTY

Number: 24
Street: Ferry Street
Suburb: Hunters Hill
Post Code: 2110
GPS: Co ordinates : Longitude 151.1557741 Latitude -33.83649565



2. DETAILS

Listed Significant Trees:

Botanical Name	Common Name
<i>Araucaria bidwillii</i>	Bunya Pine

Public or Private Type: Private
Group or Individual: Individual
Date of Assessment/Inspection: 19.11.2015

3. STATEMENT OF SIGNIFICANCE

The *Araucaria bidwillii* (Bunya Pine) provides a dramatic sense of scale and vertical accent to the streetscape and is considered to have landmark qualities (*aesthetic value*).

The specimen tree reflects the eclectic thematic planting styles of the Victorian era, particularly the influences of Charles Moore (Director, Royal Botanic Gardens 1848-1896) and the Gardenesque style (*historic value*).

The Araucaria bidwillii (Bunya Pine) is considered to have individual local significance in terms of aesthetic and historic value.

4. IMAGES





5. SIGNIFICANT ATTRIBUTES

Cultural/Social/Commemorative Historic Botanical/Scientific Ecological Visual/Aesthetic

6. SIGNIFICANT LEVELS

Local State National

7. BACKGROUND

The scheduled tree is an *Araucaria bidwillii* (Bunya Pine) located within the front garden at 24 Ferry Street, Hunters Hill.

It is recorded that the dwelling at 24 Ferry Street may have been the house of Fred Thurston and dates from the 1860s. Seed merchant Arthur Yates possibly lived here in 1889. ¹

Araucaria bidwillii (Bunya Pine) is a highly ornamental Australian rainforest tree with a distinctive, broadly spreading canopy and dramatic silhouette. It was frequently planted with other native Australian pines. Bunya Pine was a prized and valued component of many mid to late 19th century gardens but is now relatively uncommon within the Hunters Hill area. The Bunya Pine's large woody cones (up to 30cm long) bearing edible seeds were a major food source for local Aboriginal tribes in south-eastern Queensland.

These highly ornamental trees, with their dramatic symmetry and scale, were frequently planted as feature or landmark trees within private garden estates and public parklands throughout the 19th century. They were often planted together with a range of other native rainforest and broadleaf evergreen species.

The use of this species reflects the eclectic thematic plantings styles of the period, particularly the influences of Charles Moore (Director, Royal Botanic Gardens 1848-1896) and the Gardenesque style.

A mature Bunya Pine is located further towards Parramatta River at 9 Ferry Street. The Bunya Pine, and additional trees located at the site, are listed in the Hunters Hill Local Environment Plan (2012) Schedule 5 (Item 471) and in Council's Significant Tree Register. The Bunya Pine at 9 Ferry Street is believed to date from the mid 19th century.

A review of aerial images from 1943 shows what is believed to be the Bunya Pine. Additional trees are evident along the southern boundary to the site. It is difficult to accurately date the subject tree. However, with consideration to documentary data and the species slow growth rate, it is considered likely the Bunya Pine dates from the late 19th century to early 20th century.

The specimen Bunya Pine is prominently located and provides a dramatic sense of scale and vertical accent to the streetscape.

References:

Hunters Hill Council, *LEP Catalogue Files*, accessed 26.02.2016

8. ADDITIONAL IMAGES

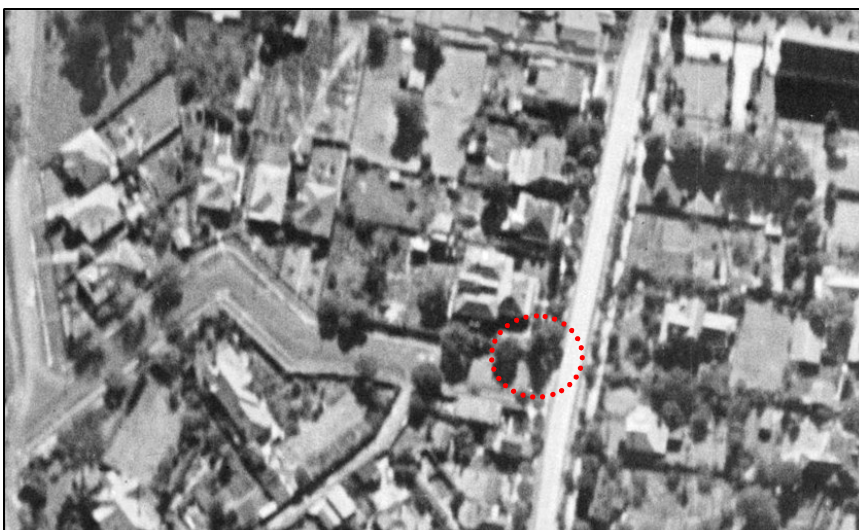


IMAGE SOURCE:

RTA, From the Skies, 1943